

KEY WEST GOLF CLUB

BUNGALOW STYLE A1



STYLE A1

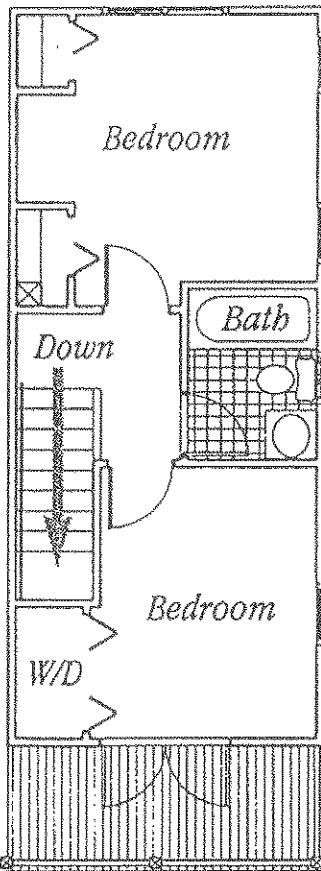
STYLE A1

FRONT ELEVATION

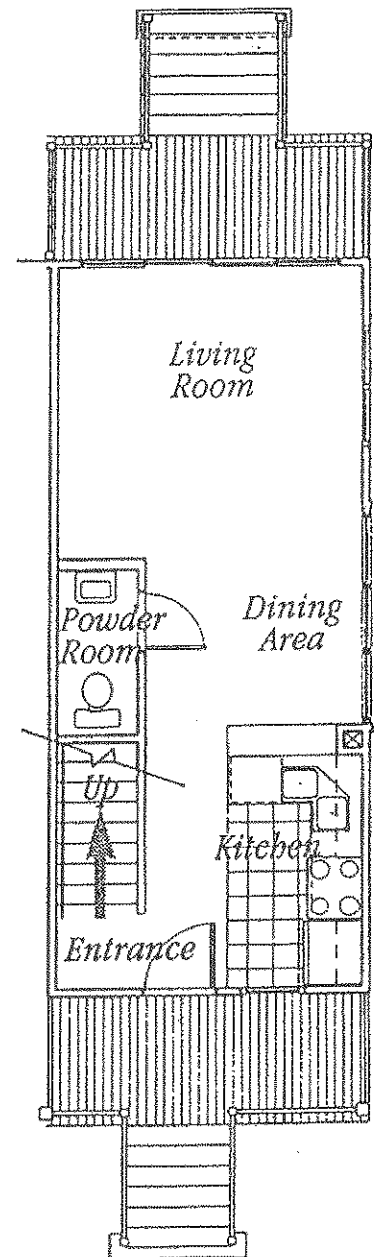
Key West Golf Club



Front
Elevation



Second
Floor



First
Floor

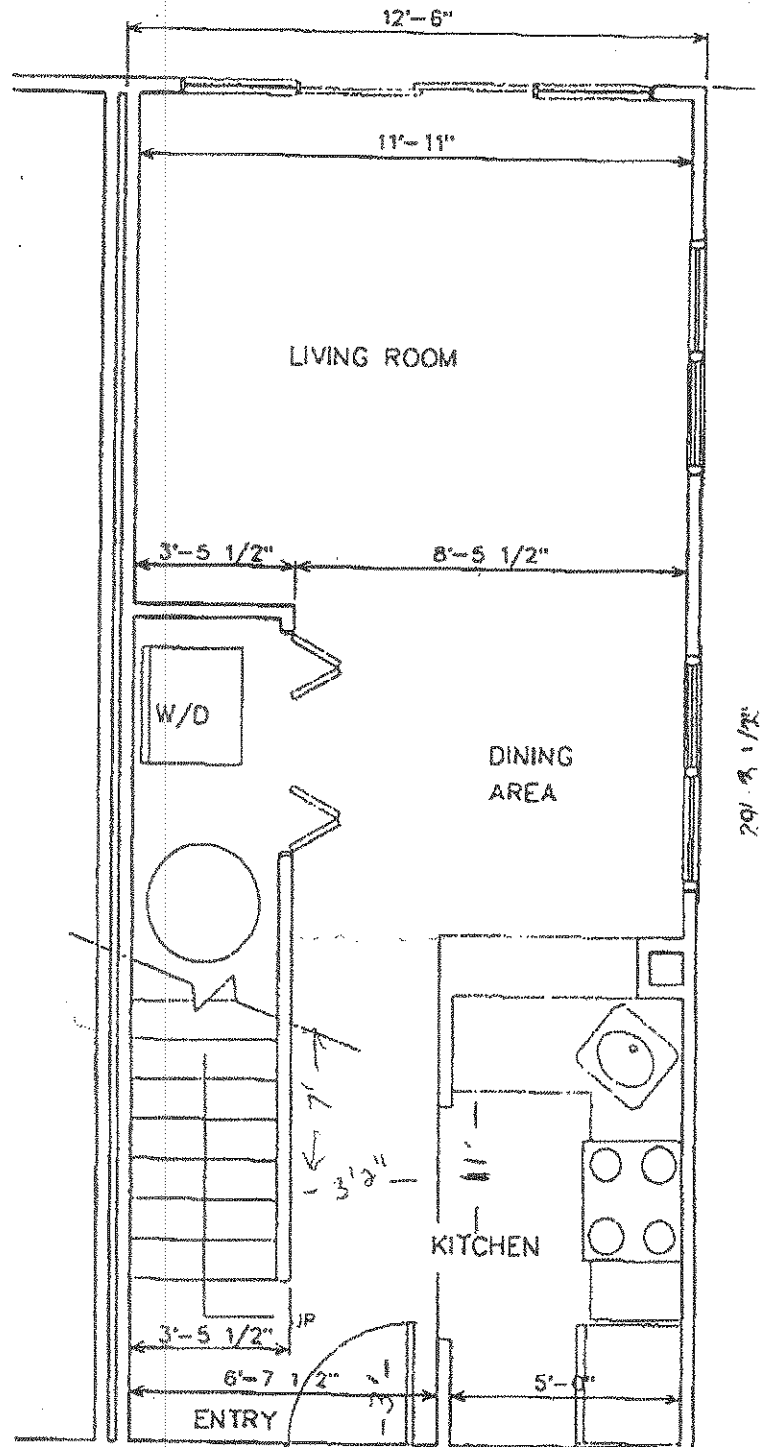
732 sq. ft.

Bungalow Style

*Roof lines, front decorative kitchen windows and front doors subject to change. Washer/Dryer is an upgrade.

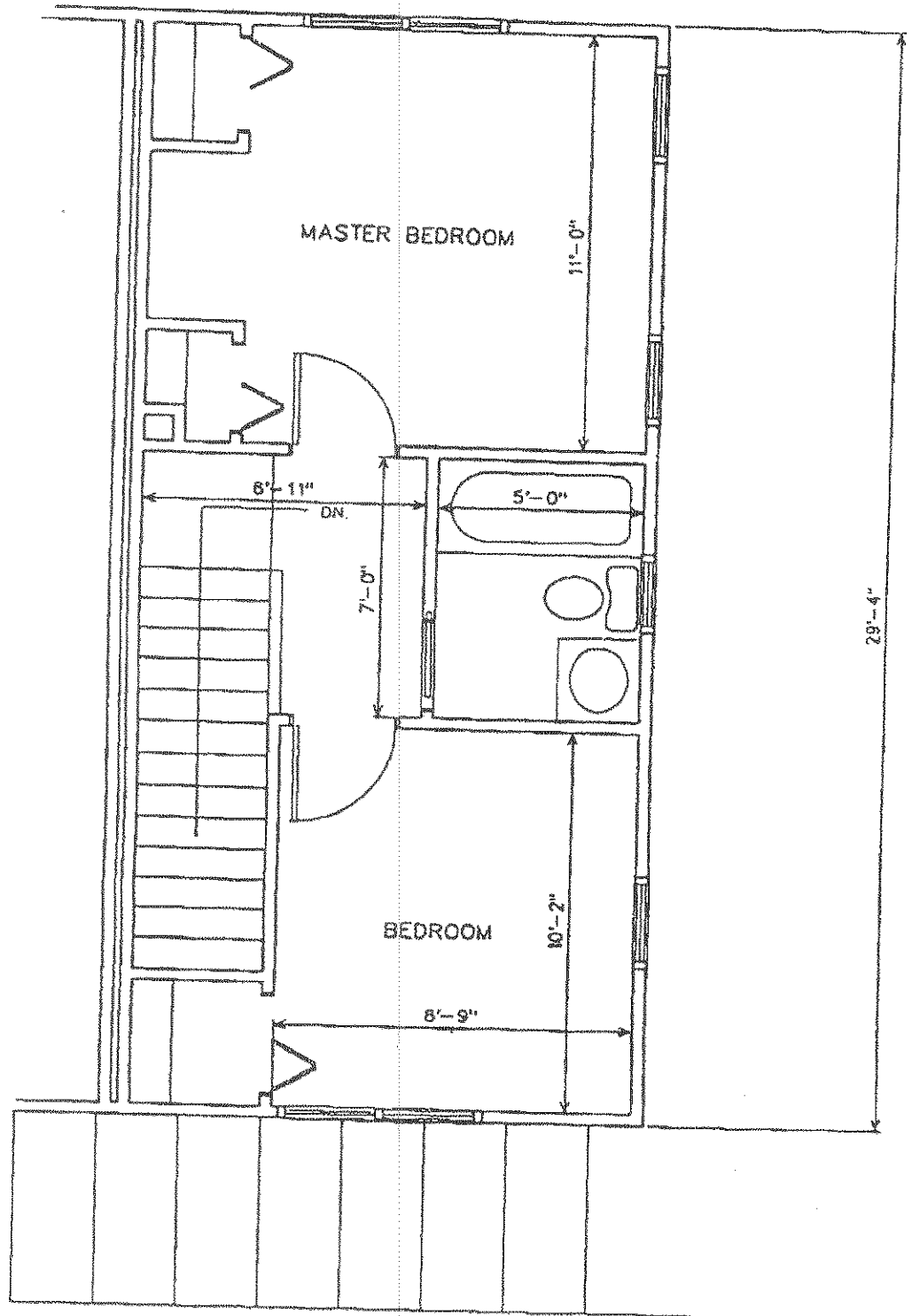
KEY WEST GOLF CLUB

BUNGALOW STYLE A



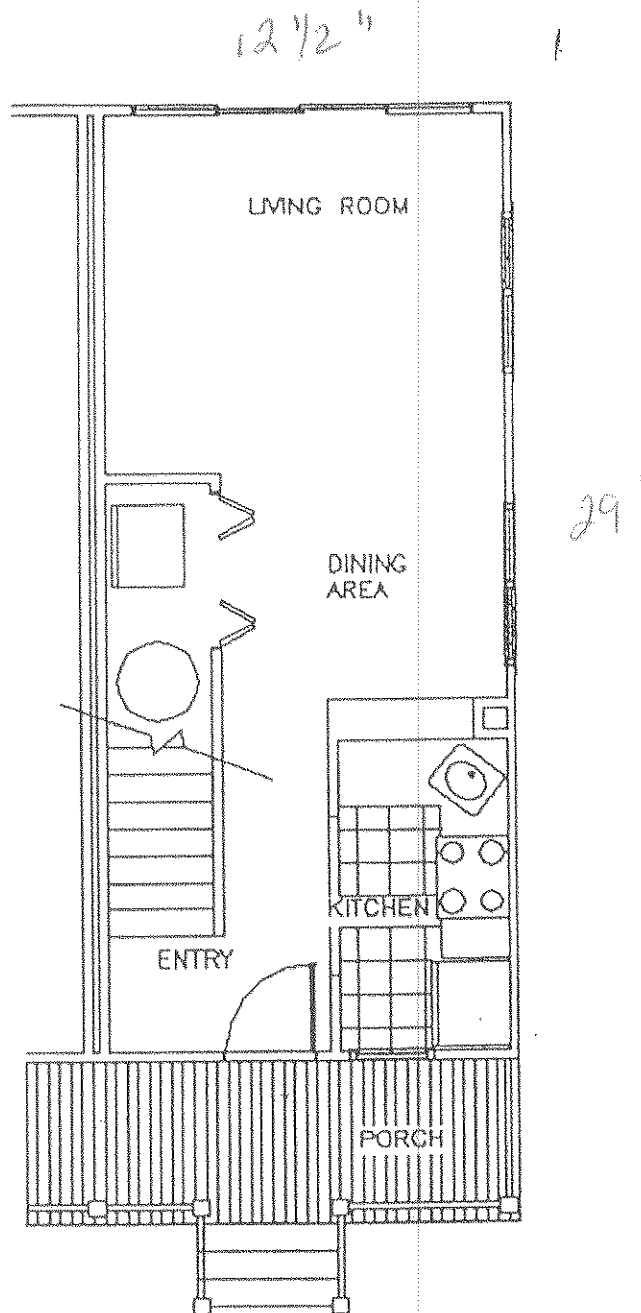
KEY WEST GOLF CLUB

BUNGALOW STYLE A



KEY WEST GOLF CLUB

BUNGALOW STYLE A2



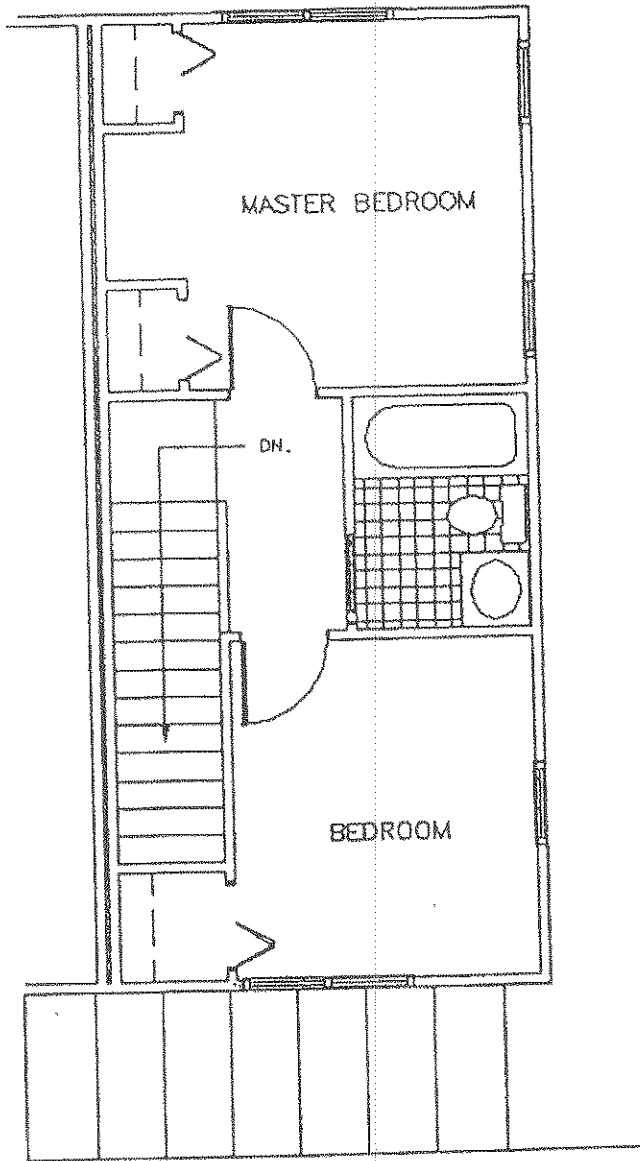
FIRST FLOOR PLAN



720 S.F.

KEY WEST GOLF CLUB

BUNGALOW STYLE A2



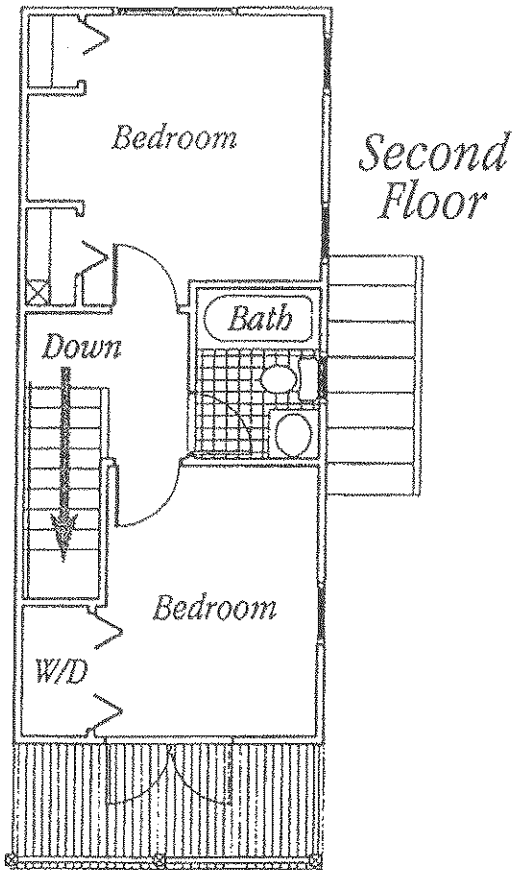
SECOND FLOOR PLAN



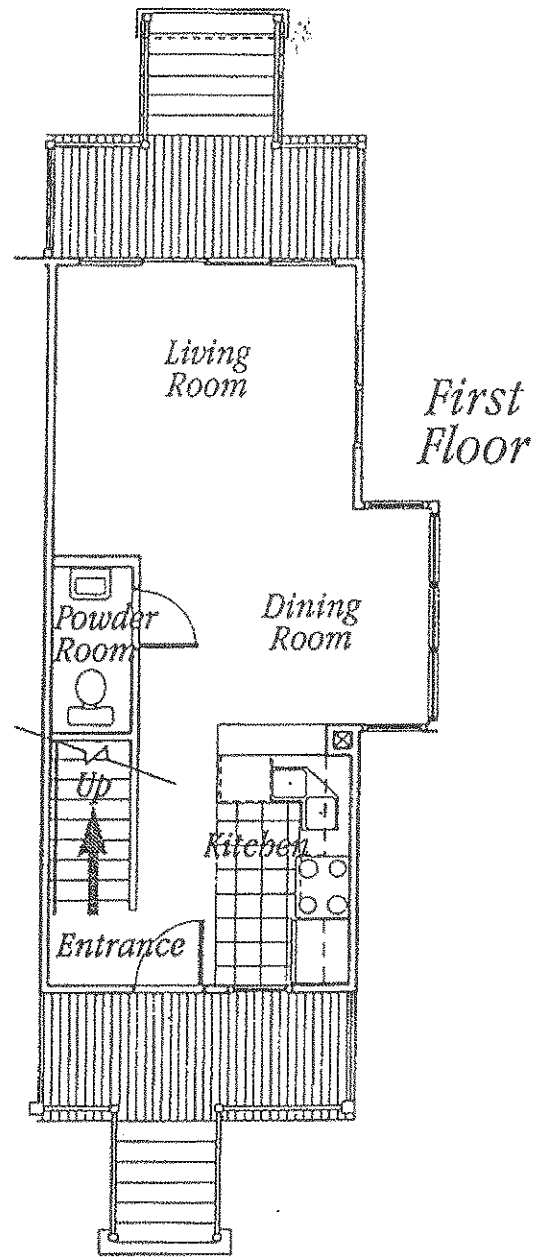
Key West Golf Club



*Front
Elevation*



*Second
Floor*



*First
Floor*

Bungalow Style with Side Bay

**Roof lines, front decorative kitchen windows and front doors subject to change. Washer/Dryer is an upgrade.*